

# 230-400±15V / 24VDC - max 10% ripple

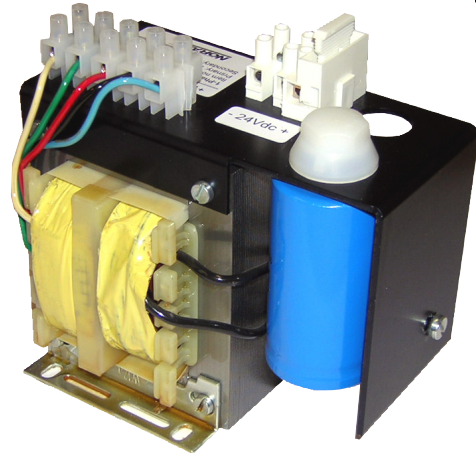


## Type SUSL

Single-phase DC power supply with 24 VDC secondary voltage. Max. residual ripple approx. 10%. Designed and tested according to norm EN61558-2-6. Separate insulated windings. Protected against short circuit and overload with glass-tube fuse on. For fixed installation in cabinets or switchboards.

## Application:

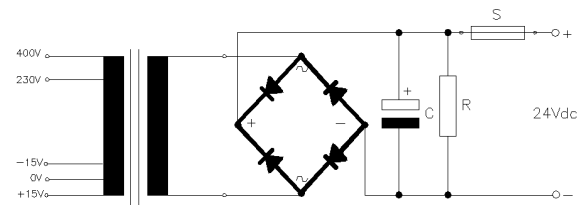
Power supply for PLC requiring DC voltage with max. 10% residual ripple. 230 or 400 Volt system voltage.



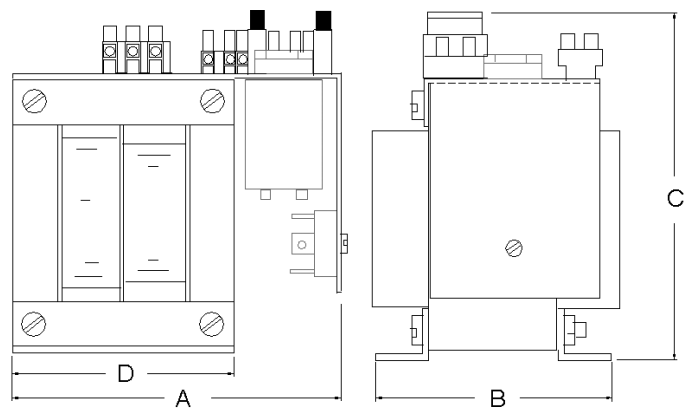
## Technical specifications

- Input voltage: 230-400 V
- Frequency: 47-63 Hz
- Output voltage: 24 VDC
- Max Ripple: 10% RMS
- Efficiency: >65%
- According to: EN61558-2-6
- Test/insulating voltage: 4 kV AC RMS
- Construction class: Klasse I
- Insulation class: B (130°C)
- Ambient temp. ( $t_a$ ): 40°C
- Degree of protection: IP00

## Wiring diagram



## Dimensions



Type	Voltage Sec. (VDC)	Current Sec. (A)	Power (W)	Losses (W)	Dimensions A-B-C-D (mm)	Weight (Kg)	Art. no.
<b>230-400±15V / 24VDC</b>							
SUSL096B	24	5	120	34	130-80-134-80	3,2	5-192-000012
SUSL096C	24	7,5	180	55	130-94-134-80	3,9	5-192-000013
SUSL120B	24	10	240	61	150-100-160-100	5,4	5-192-000014
SUSL120C	24	15	360	92	150-120-160-100	6,9	5-192-000015
SUSL150B	24	20	480	118	180-124-187-125	10,6	5-192-000016